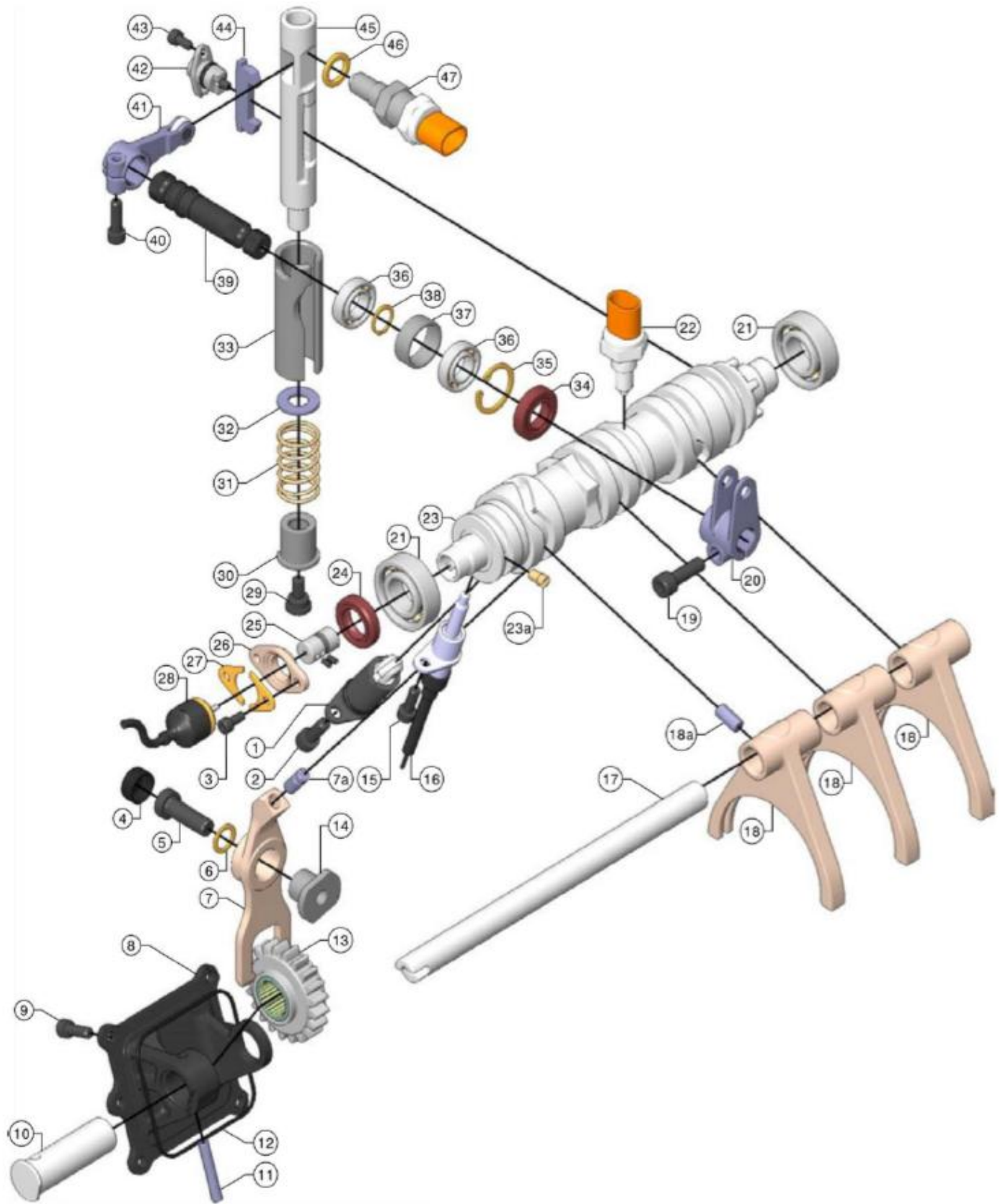


BOITE DE VITESSE SCL82





**MITJET
SERIES
RUSSIA**

POWERED BY ARCTIC ENERGY

TARIFS HT

N°	REF	DESCRIPTION	DESCRIPTION	QTE
1	BV317	KIT INDEXEUR	INDEXING KIT	1
1a	BV318	GOUPILLE MECANINDUS Ø2.5X18	INDEXING PIN Ø2.5X18	1
1b	BV319	RESSORT D'INDEXAGE 1.4X9.7X44	INDEXING SPRING 1.4X9.7X44	1
1c	BV320	JOINT TORIQUE NITRILE Ø16X2	NITRILE OIL WASHER Ø16X2	1
2	BV321	VIS CHC M7X16 CL10.9 ZN	CAP HEAD SCREW M7X16 CL10.9 ZINC	1
3	BV322	VIS CHC M5X12 CL 8.8 ZN	CAP HEAD SCREW M5X12 CL8.8 ZINC	2
4	BV323	CACHE TÊTE DE VIS	SCREW HEAD COVER	1
5	BV324	VIS CZHC M10X30 CL 10.9 ZN HK	CAP HEAD SCREW M10X30 CL 10.9 ZINC	1
6	BV325	RONDELLE CUIVRE 10.2X15X1	COPPER WASHER 10.2X15X1	1
7	BV326	BASCULEUR DE MARCHÉ ARRIÈRE EQUIPE	REVERSE GEAR SELECTOR	1
7a	BV327	DOIGT DE COMMANDE DE MARCHÉ ARRIÈRE	REVERSE GEAR SELECTION PIN	1
8	BV328	CARTER DE MARCHÉ ARRIÈRE	REVERSE IDLER GEAR SUPPORT	1
9	BV329	VIS CHC M6X18 CL 8.8 ZN	CAP HEAD SCREW M6X18 CL8.8 ZINC	6
10	BV330	AXE DE RENVOI DE MARCHÉ ARRIÈRE	REVERSE IDLE GEAR SHAFT	1
11	BV206	GOUPILLE MECANINDUS Ø6x30	INDEX PIN Ø16X30	1
12	BV331	JOINT TORIQUE NITRILE Ø85X2	NITRILE OIL WASHER Ø85X2	1
13	BV332	RENOVI DE MARCHÉ ARRIÈRE	REVERSE IDLER GEAR	1
13a	BV333	DOUILLE A AIGUILLES HK 20/20	ROLLER BEARING HK 20/20	1
14	BV334	ECROU DE BASCULEUR	REVERSE GEAR SELECTION ARM PIVOT	1
15	BV335	VIS CHC M6X16 CL 8.8 ZN	CAP HEAD SCREW M6X16 CL8.8 ZINC	1
16	BV213	CABLE VERROUILLAGE MAR	GEAR CHANGER CABLE LOCK	1
17	BV268	AXE DE FOURCHETTE	SELECTOR FORK SHAFT	1
18	BV269	FOURCHETTE DE SELECTION EQUIPEE	SELECTOR FORK SET	3
18a	BV270	DOIGT DE COMMANDE	SELECTION PIN	1
19		Vis CZHC M8x25 CL 10.9 ZN	SCREW CZHC M8x25 CL 10.9 ZN	1
20	BV271	FOURCHE DE COMMANDE	GEAR SELECTOR ARM	1
21	BV226	ROULEMENT A BILLE 6004	BALL BEARING 6004	2
22	BV292	CAPTEUR SHIFT BV	GEAR SELECTION SENSOR	1
23	BV336	BARILLET	RATCHETING DRUM	1
24	BV337	JOINT DOUBLE LEVRE NITRILE Ø18X30X7	OIL SEAL NITRILE Ø18X30X7	1
25	BV272	ACCOUPLMENT AVEC VIS	COUPLING WITH SCREWS	1
25a	BV338	VIS HC M3X6 A BOUT PLAT CL 10.9 BRUT	HEX HEAD SCREW M3X6 FLAT END CL10.9	2
26	BV273	SUPPORT DE POTENTIOMETRE	POTENTIOMETER SUPPORT	1
27	BV274	BRIDE DE POTENTIOMETRE	POTENTIOMETER CLAMP	2
28	BV212	POTENTIOMETRE BOITE DE VITESSE	GEARBOX POSITION POTENTIOMETER	1
29	BV339	VIS EPAULEE DE COMMANDE	GEAR SELECTOR SHOULDERED SCREW	1
30	BV340	BAGUE EPAULEE	SHOULDERED BUSH	1
31	BV341	RESSORT RAPPEL DE COMMANDE	GEAR SELECTOR SPRING	1
32	BV342	RONDELLE D'APPUIS	THRUST WASHER	1
33	BV343	CHEMISE AXE DE COMMANDE	GEAR SELECTOR SLEEVE	1
34	BV344	JOINT DOUBLE LEVRE NITRILE Ø15X30X7	OIL SEAL NITRILE Ø15X30X7	1
35	BV345	CIRCLIPS INTERIEUR Ø28	INTERIOR CIRCLIP Ø28	1
36	BV346	ROULEMENT A BILLES 61902	BALL BEARING 61902	2
37	BV347	ENTRETOISE DE SELECTION EXTERNE	EXTERNAL SELECTION ROD BUSH	1
38	BV348	CIRCLIPS EXTERIEUR Ø15	INTERIOR CIRCLIP Ø15	1
39	BV349	AXE DE LINGUET	EXTERNAL SELECTOR SHAFT	1
40	BV350	VIS BHC M6X20 CL 10.9 BRUT	TRUSS HEAD SCREW M6X20 CL10.9	1
41	BV351	LINGUET ASSEMBLE	SELECTOR LEVER ASSEMBLY	1
42	BV352	POUSSOIR DE CLIQUET ASSEMBLE	RATCHET ASSEMBLY	1
42a	BV353	JOINT TORIQUE NITRILE Ø10X2.5	NITRILE OIL WASHER Ø10X2.5	1
43	BV354	VIS CHC M5X10 CL 8.8 ZN	CAP HEAD SCREW M5X10 CL8.8 ZINC	2
44	BV355	CLIQUET DOUBLE EVO2	DOUBLE RATCHET EVO2	1
45	BV356	AXE DE COMMANDE	SELECTOR SHAFT	1
46	Cf liste	CALE CONTACTEUR	SWITCH OIL SEAL	1
47	BV301	CONTACTEUR AVEC REHAUSSE	SWITCH WITH EXTENSION	1