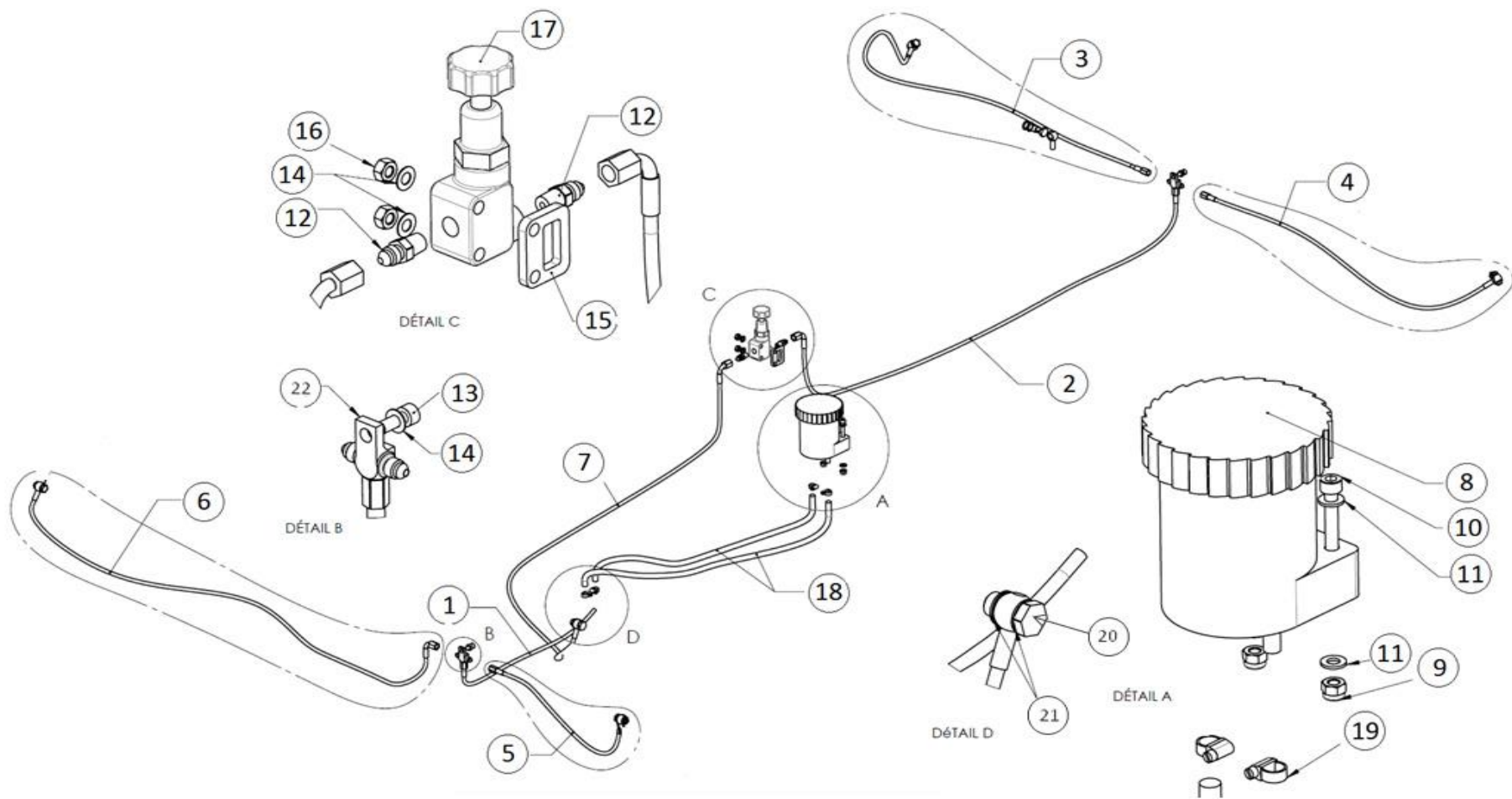


CIRCUIT DE FREIN



TARIFS HT

N°	REF	DESCRIPTION	DESCRIPTION	QTE
1	FR213	FLEXIBLE FREIN EMETTEUR - TAV	FLEX PIPE MASTER CYLINDER TO FRONT	1
2	FR215	FLEXIBLE FREINS LIMITEUR-TAR	FLEX PIPE LIMITER TO REAR TEE	1
3	FR217	FLEXIBLE FREINS ARD	REAR RIGHT FLEX PIPE	1
4	FR216	FLEXIBLE FREIN ARG	REAR LEFT FLEX PIPE	1
5	FR211	FLEXIBLE FREINS AVG	FRONT LEFT FEX PIPE	1
6	FR212	FLEXIBLE FREINS AVD	FRONT RIGHT FLEX PIPE	1
7	FR214	FLEXIBLE FREINS EMETTEUR-LIM	FLEX PIPE MASTER CYLINDER TO LIMITER	1
8	FR201	BOCAL DE FREIN	BRAKE FLUID RESERVOIR	1
9	CC245	ECROU M6 NYLSTOP ZINGUE	ZINC NYLOCK NUT M6	2
10	TR220	VIS CHC M6x35-25 CL10.9 Bichro	CAP HEAD SCREW M6X35-25 CL10.9	2
11	CC230	RONDELLE D6 D12 CONTACT	WASHER D6 D12	4
12	FR223	ADAPTATEUR DASH3 - 1/8 NPTF	ADAPTOR DASH3 -1/8 NPTF	2
13	TR221	VIS CHC M6x16 CL8.8	CAP HEAD SCREW CHC M6X16 CL8.8	2
14	EQ225	RONDELLE D6 D12 EP0 5 ONDULEE	ANTI VIBRATION WASHER D6 D12 0.5mm	4
15	BV217	ENTRETOISE LIMITEUR DE FREIN	PRESSURE LIMITER BRACKET	1
16	TAR258	ECROU M6 BRUTE	M6 NUT	2
17	FR206	LIMITEUR DE PRESSION DE FREIN	PRESSURE LIMITER	1
18	FR221	TUYAU BOCAL FREIN	BRAKE PIPE RESERVOIR TO MASTER	2
19	FR230	COLLIER SERFLEX D7 D11 LG 9	JUBILEE CLIP D7 D11 LG9	4
20	CE06	VIS BANJO SIMPLE 3/8	BANJO BOLT 3/8	6
21	ES214	JOINT CUIVRE D12 18X1 5	COPPER WASHER D12X18X1.5	12
22	FR08	TE FILETE	TEE PIECE	2